

Christoudias

DOUBLE-JAWED INSTRUMENTS FOR LAPAROSCOPY



These unique Christoudias Double-Jawed Instruments are designed to assist in a wide variety of Laparoscopic Procedures. The Tissue Approximator simplifies tissue apposition during Endosuturing and stapling. The Graspers allow one surgeon to control tension and counter-tension of tissue during dissection.

Easy-to-Operate 2 Lever System:



Above: Two-Lever System Operates Upper and Lower Jaws



Upper Jaw opened by Silver Lever



Lower Jaw opened by Gold Lever

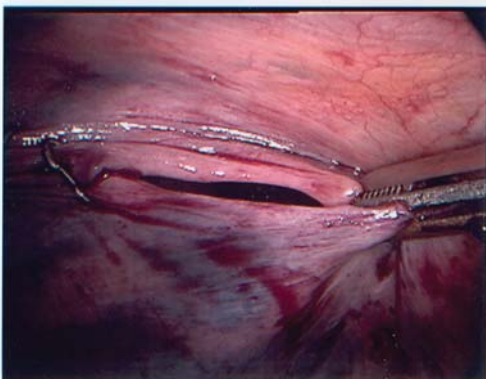


Press both Levers to open both Jaws

Available from Stock:



Product No. 91058, Double-Jawed Tissue Approximator



Shown above: No. 91058 Tissue Approximator in use for closure of peritoneum in a TAPP Hernioplasty.

New Models Available Soon:

- 91059, Double-Jawed Wave Grasper
- 91060, Double-Jawed Fenestrated Grasper

Contact your Mediflex Distributor now for more information or product evaluation.

Mediflex[®]
SURGICAL PRODUCTS